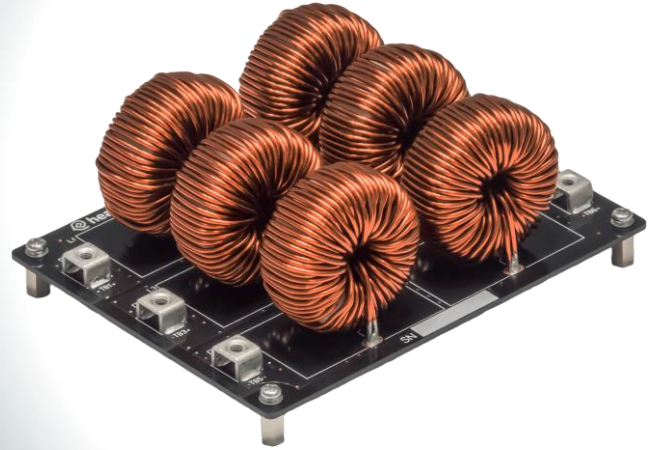


High-Frequency Reactor Board

HHLB-3A-181200



Abstract

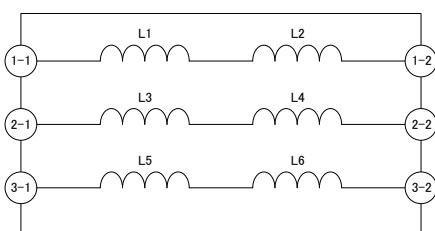
- 3-line Reactor Board
- Applicable for inverter output filter, interconnection reactor of grid-tied inverter, averaging reactor for DCDC converter
- Compatible to Headspring SiC/GaN Circuit Block and SiC Three Phase Inverter

Features

Liquallow™ Core on Board

- Advanced high-frequency characteristics over 100kHz class for SiC/GaN application
- Superior DC superimposition characteristics
- Low Core-loss and high tolerance against current ripple

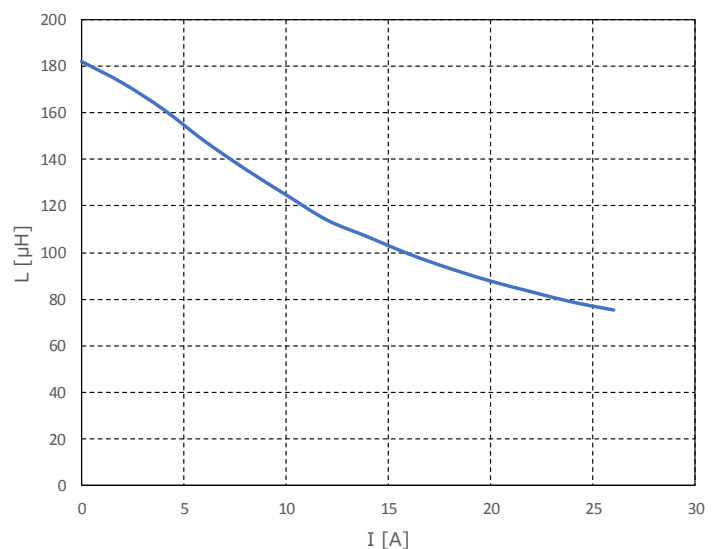
Block Diagram



Specification

Subject	Specification	Notes
Size	W 126 mm D 100 mm H 50 mm	Excluding protuberance
No of Line	3 Lines	
Maximum Current	20 A	
Inductance (per line)	182μH (Typ.)	100kHz 10mA, Zero DC Bias

DC superimposition characteristics



As of June/2017

* Specifications and Design are subject to change without notice.